

Duraflor

Access Floor System

FLOORS THAT SUPPORT TODAY'S BUSINESS ENVIRONMENT



THE CURRENT RANGE OF DURAFLOR ACCESS FLOORS PRODUCTS HAVE BEEN SPECIALLY DESIGNED TO CATER FOR THE DEMANDS AND FLEXIBILITY REQUIRED BY TODAY'S HIGHLY TECHNOLOGICAL BUSINESS ENVIRONMENT.

INTRODUCTION



Kallang Office

HART presents the Duraflor System for Raised Access Flooring

For General Offices or Data Center, for Clean Rooms or for specialist applications, Duraflor access floors ensure that convenience is built-in for every building:

- Conceal literally miles of cabling, yet allowing easy and fast access for maintenance or redesign.
- Guaranteed outstanding rigidity even under extreme loads.
- Ensure cost savings from the time of construction to the time of occupation and beyond.

There's more to Duraflor than meets the eye

The widest range of access floors in this region and the rigorous standard they meet the visible signs of Duraflor leading position in interiors industrial.

By asking for Duraflor systems, you will get much more than what the name promises.

A range to meet all your needs

Whatever your application, Duraflor has a solution. Innovative solutions like the advanced systems means Duraflor has the access floor that will meet local performance standards. From offices to manufacturing facilities, you will find the perfect solution to your flooring needs.

Assets protection for a safe future

Hart is one of the longest and most established leaders in providing top quality access floor system and services.

Established in 1971, Hart has grown from a simple fire protection company to the diversified conglomerate today.

With our extensive experience and proven expertise, we act firmly as your business partner in assets protection for a safe future.

Quality assurance

At Hart, we do not make empty promises. Our raised floor supplier is certified by ISO 9001: 2000. We ensure stringent manufacturing inspection procedures and all our finished products are tested for full quality assurance.

Research & Development

Innovative solutions such as the Solid-flo 45% and 55% High Volume Air Flow panel & D'Brush cable grommet are the results of extensive investment in R & D.

Our dedicated research facilities are custom designed for investigative, developmental and evaluative research to keep us at the leading edge of the interiors industry.

From small projects to major international developments, Hart provides the solution you need, whenever and wherever you need it.



Tuas Factory

GENERAL OFFICE

Access floor panels for general office come with complete accessibility to underfloor space without sacrificing performance level. Panels are bare for carpet tile application or are presented in other final finishes selected by interior designer.



Specification for Raised Floor Panel

| Panel | | RSF 800 | RSF 1000 | RSF 1250 | RSF 1500 | RSF 2000 |
|-------------------------------------|-------------------|---------|----------|----------|----------|----------|
| Concentrated Load | Kn | 3.6 | 4.5 | 5.6 | 6.7 | 8.8 |
| Uniform Distributed Load | Kn/m ² | 13 | 17 | 22 | 22 | 22 |
| Ultimate Load (3 Times of Con Load) | Kn | 10.8 | 13.5 | 16.8 | 20 | 25 |
| Rolling Load | Kn | 2.7 | 3.6 | 4.5 | 5 | 5.5 |
| Impact Load | Kg | 46 | 55 | 66 | 80 | 80 |

This specification table will share between Page 3 and Page 4.

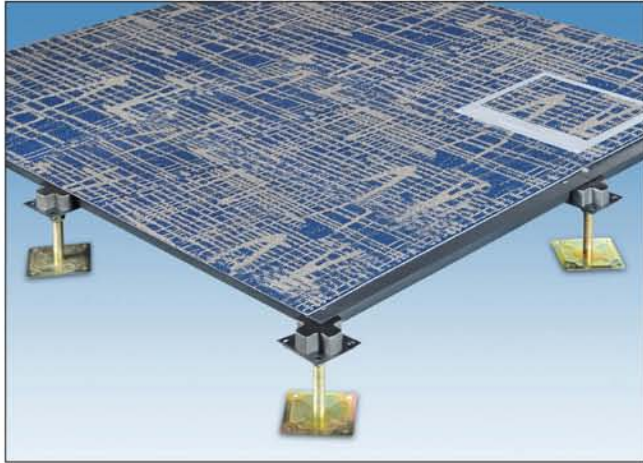
DATA CENTER

Duraflor access floor system provide the required stability for data centers, incorporating high degrees of accessibility and flexibility, expediting system upgrades when necessary.



UNDERSTRUCTURE

These understructure are designed for use at both general office and data center. They ensure rigidity, lateral stability, quiet performance as well as a solid and secured underfoot feel.



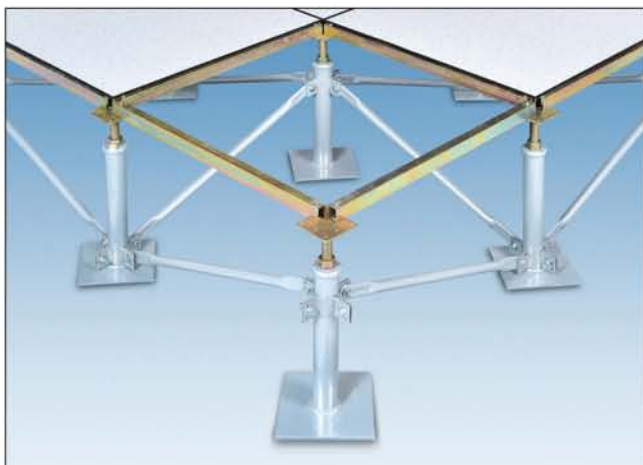
Panel Lock System

The Panel Lock System is suitable for general office application. Each panel is mechanically fastened to the pedestal head at all four corners, ensuring rigidity and lateral stability. Access is achieved by releasing the fasteners and lifting the panel. Each pedestal head has locking nuts to ensure that the pedestal height is maintained.



Rigid Grid System

The Rigid Grid System is suitable for General Office, Data Center and Server Room applications. They provide high stability by utilizing stringers which hold the floor and pedestal head in position when panels are removed. Stringers are mechanically secured onto the pedestal head.



Rigid Grid with Bracing System

The Rigid Grid with Bracing System is suitable for the above mentioned usages that required maximal stability, as well as for extreme high finish floor height application.

DURAFLOR SYSTEM FINISHES

Although Duraflor panels can be covered with loose lay carpet tiles, Duraflor system includes a wide range of factory applied finishes and an even wider range of colour option. From hardwearing High Pressure Laminates (HPL) to homogeneous press vinyl tile finishes, Duraflor has the tailor-made solution for any application.

HPL Finishes - 1.2mm, 1.5mm



Grey Starlite (Stock Standard Colour)



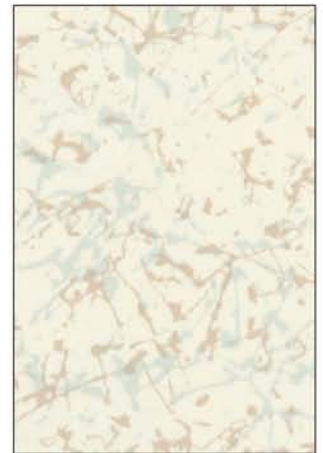
8137



8138



8144



8194

Conductive Vinyl Finishes - 2mm / 3mm



C-601



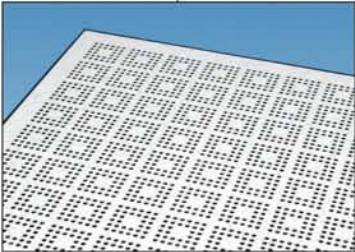
C-6101



C-605

ACCESSORIES

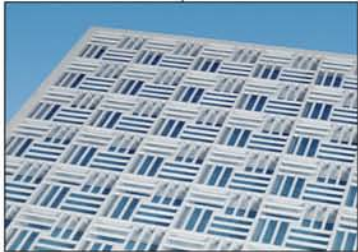
Solid-Flo High Volume Air Panel



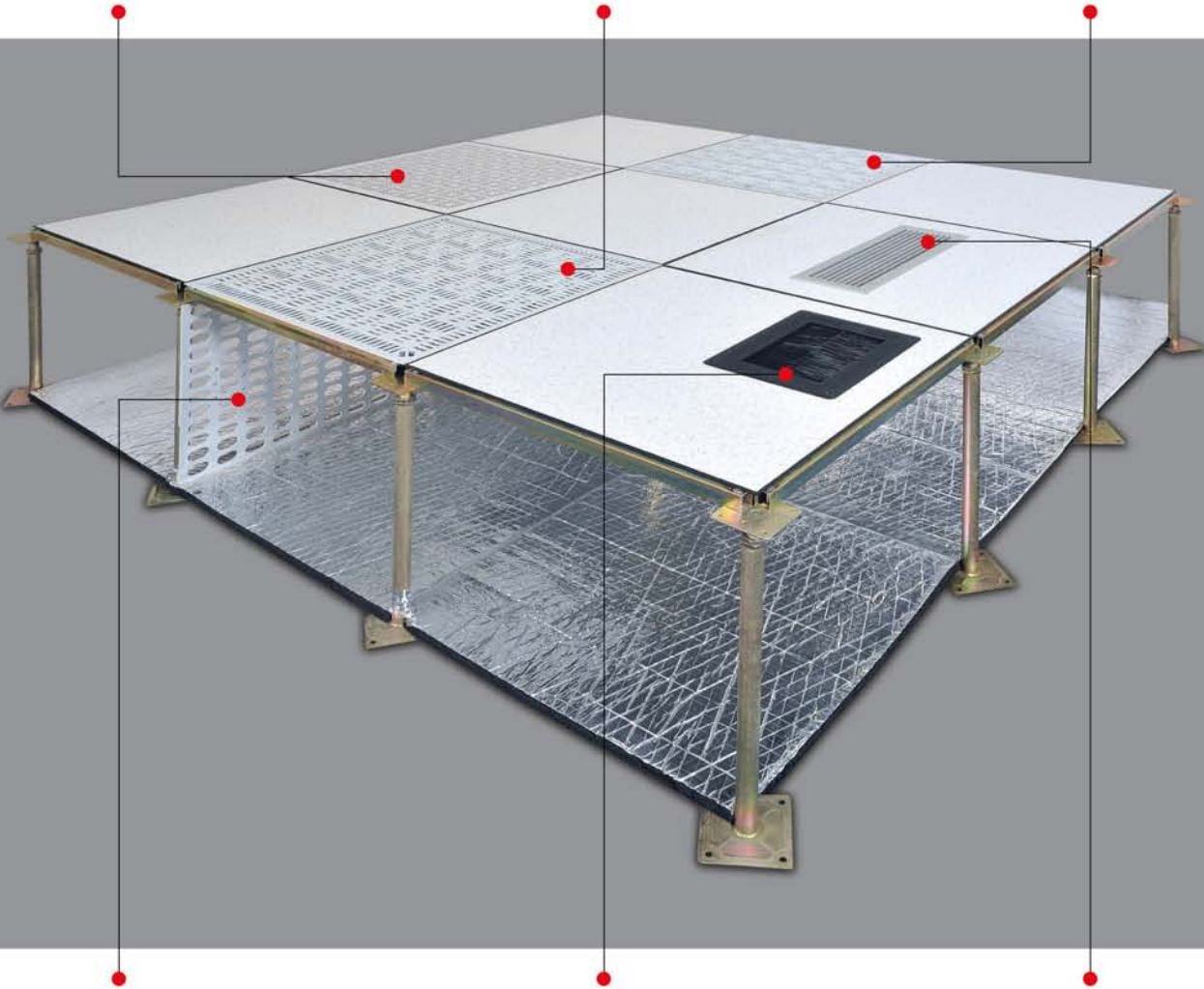
Perforated Panel (22% Opening)



Solid-Flo 45 (45% Opening)



Solid-Flo 55 (55% Opening)



Plenum Air Balancer
(Designed and make to requirement)



D'Brush Cable Grommets
Size: 284mm (L) x 214mm (W)
Size: 214mm (L) x 214mm (W)
Custom size on request



Floor Grille



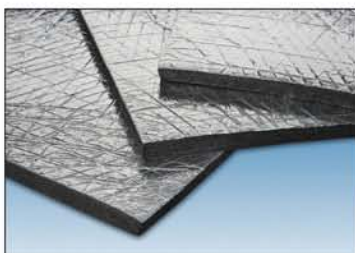
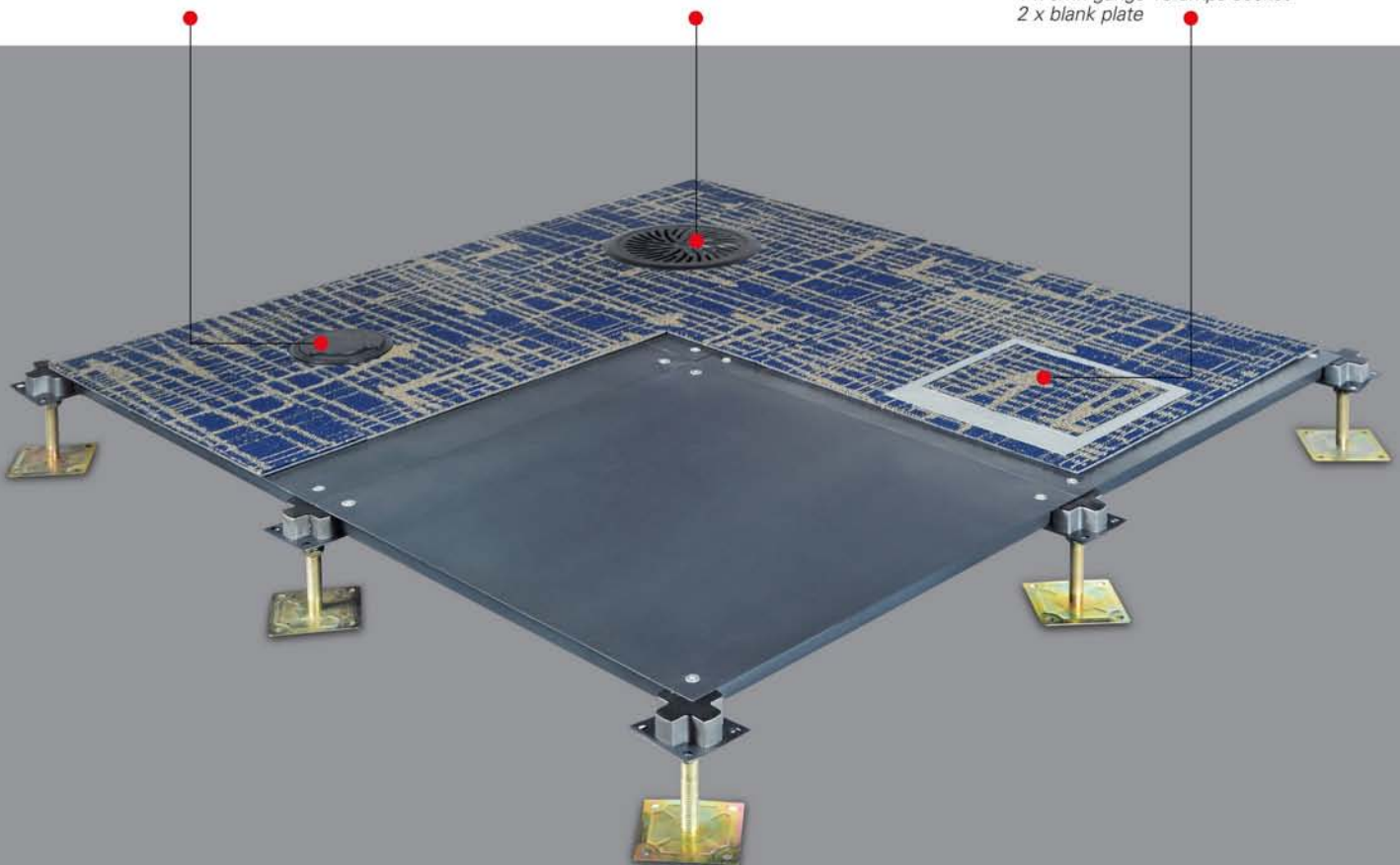
Grommet (140mm Diameter)



Air Diffuser (200mm Diameter)



3 Compartment Service Outlet Box
Size: 278mm (L) x 278mm (W)
1 x twin gangs 13 amps socket
2 x blank plate



Close Cell Thermal Insulation
(25mm to 50mm thick Close Cell
Thermal Insulation with factory
laminated high quality aluminium foil)



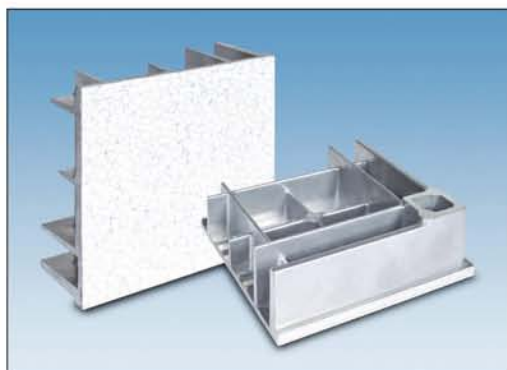
Double Cup Panel Lifter



Opposed, Sliding & Circular Damper

ALUMINIUM ACCESS FLOOR SYSTEM

The Duraflor Aluminium access floor system for clean rooms is appropriate for controlled processing environments such as integrated chip manufacturing, biomedical testing, pharmaceutical manufacturing and chemical processing.



| SOLID PANEL | | ASP 1000 | ASP 1200 |
|--------------------------|-----------------------------------|----------|----------|
| Concentrated Load | Kgf/6.45cm ² | 1000 | 1200 |
| Uniform Distributed Load | Kgf/m ² | 2000 | 2200 |
| Ultimate Load | kgf/6.45cm ² at center | 2000 | 2500 |



| PERFORATED PANEL | | APF 1000 | APF 1200 |
|--------------------------|-----------------------------------|----------|----------|
| Concentrated Load | Kgf/6.45cm ² | 800 | 1000 |
| Uniform Distributed Load | Kgf/m ² | 1350 | 1450 |
| Ultimate Load | kgf/6.45cm ² at center | 1800 | 2200 |



| GRATED PANEL | | AGT 1000 | AGT 1200 |
|--------------------------|-----------------------------------|----------|----------|
| Concentrated Load | Kgf/6.45cm ² | 800 | 1000 |
| Uniform Distributed Load | Kgf/m ² | 1350 | 1450 |
| Ultimate Load | kgf/6.45cm ² at center | 1800 | 2200 |



PROJECTS DONE BY HART SINCE 1981

• DEVELOPMENT BANK OF SINGAPORE, CHANGI BUSINESS PARK • DEVELOPMENT BANK OF SINGAPORE, THE COMTECH
 • DEVELOPMENT BANK OF SINGAPORE, SHENTON WAY TOWER • STANDARD CHARTERED BANK, CHANGI BUSINESS PARK
 • TAMPINES GRANDE, TAMPINES CENTRAL • TOWER FIFTEEN, HOE CHIANG ROAD • CHINA SQ FOOD CENTER, TELOK AYER STREET
 • DSTA BUILDING, SCIENCE PARK III • SINGAPORE CIVIL DEFENCE, YISHUN INDUSTRIAL PARK • SINGAPORE CIVIL DEFENCE,
 JALAN BAHAR • SINGAPORE CIVIL DEFENCE, UBI AVE • VERITAS HUB, SERANGOON NORTH • AMERICAN EXPRESS, THE COMTECH
 • CREDIT SUISSE SINGAPORE, HANSAPOINT • CREDIT SUISSE SINGAPORE, SERANGOON NORTH AVENUE 5 • EQUINIX, PIONEER
 DRIVE • SINGTEL TELEPARK, TAMPINES CENTRAL • SINGTEL COMCENTRE III, EXETER ROAD • SINGTEL KIM CHUAN
 TELECOMMUNICATION COMPLEX, KIM CHUAN ROAD • INLAND REVENUE HOUSE, THOMSON ROAD • CITIBANK N.A, MILLENIA
 TOWER • PSA, VISTA PASIR PANJANG • CRIMTSON LOGIC, SCIENCE PARK II • OVERSEA UNION BANK, TAMPINES CENTRAL
 • PRUDENTIAL TOWER, CHINA STREET • CAPITAL SQUARE, CHINA STREET • WISMA ATRIA, ORCHARD • CHANGI AIRPORT
 POLICE STATION • SINGAPORE INSTITUTE OF MANAGEMENT, CLEMENTI ROAD 3 • PREMAS INTERNATIONAL LTD, CHAI CHEE
 TECHNOPARK • MINISTRY OF INFORMATION AND ART, HILL STREET • ST ASSEMBLY (STATS), YISHUN AVENUE • SINGAPORE
 EXCHANGE, UNITY CENTER AT SHENTON WAY • NANYANG TECHNOLOGICAL UNIVERSITY, TECHNO PLAZA • UNITED TEST AND
 ASSEMBLY CENTER, SERANGOON NORTH AVENUE 5 • UBS, SUNTEC CITY TOWER 5 • ABN AMRO, HAW PAR TECHNO CENTER



Tampines Grande, Tampines Central



DBS, Changi Business Park



Light Industrial Building, Serangoon North



Standard Chartered Bank, Changi Business Park



Tower 15, Hoe Chiang Road



No. 26, Kallang Junction, Hart House, Singapore 339279
Tel: (65) 6291 2611
Fax: (65) 6296 4514
<http://www.hart.com.sg>
E-mail: accessfloor@hart.com.sg

[illegible]