

2-4 HOUR FIRE RATED ROLLER SHUTTER



PRODUCT DESCRIPTION

Hart Roller Shutters are available up to 4 hours fire rating, with assessment for application of up to 7m (W) x 7m(H). These shutters are widely used in factories, warehouse, commercial building and complexes.

Shutters are motor operated with manual over ride. The Shutters are activated by fusible link or by solenoid actuator connected to the fire control panel.

Tested in accordance with British Standard BS 476 part 22, 1987 Section 8.

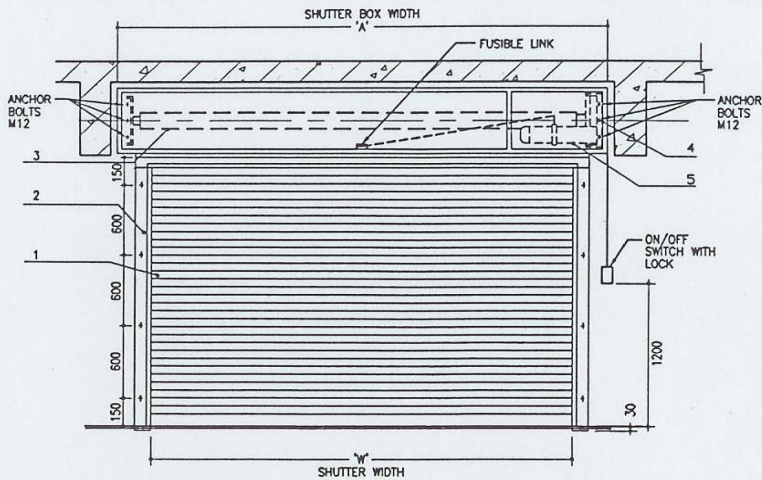
Hart products is certified to ISO 9002 : 1994.



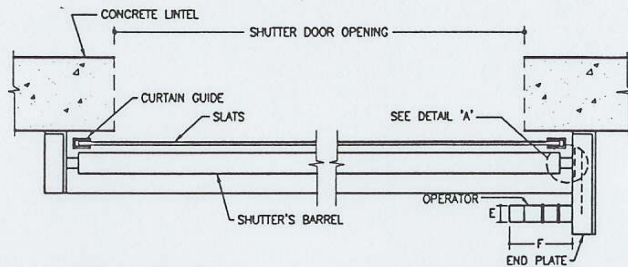
PRODUCT SPECIFICATION

- 1) Shutter Sluts
Shutters Sluts are constructed with high strength 1.2mm thick Galvanised Steel. The Slat profiles are specially designed to withstand a wind resistance of 120 kg/m² with no damage and deformation to the slats.
- 2) Curtain Guides
Made of 3mm thick Galvanised Steel, curtain guides are customized to suite mounting condition and opening size.
- 3) Bottom Rail
Bottom Rail consist of a single length of heavy duty Galvanised Angle Bar, or an inverted 'T' double Angle Bar mounted the bottom slat.
- 4) Shutter Barrels
Shutter Barrel is made of high grade steel tube, firmly supported by a solid steel axle with intermediate end plates. The size and thickness of the steel tube and axle is selected according to the opening width and height.
- 5) Operation
The Shutter is operated by a Single Phase 230 V or optional 3-Phase 415 V. The 'UP', 'DOWN' and 'STOP' function is automatically controlled by the push button in the control box. A safety feature is built-in to set the upper and lower limit of the door operation. In the event of power failure, the shutter can be operated by the handchain for manual mode.

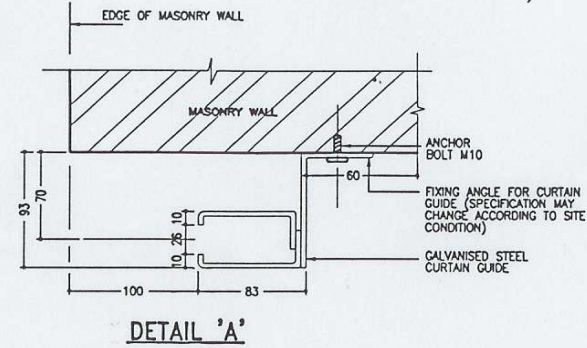
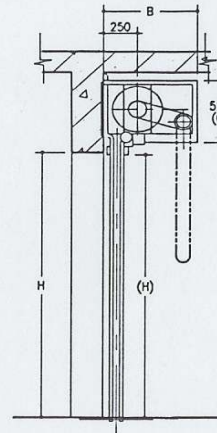
(A 3-phase power supply isolator is recommended for each motor)
- 6) Test Report Number
WFRC No. C80190



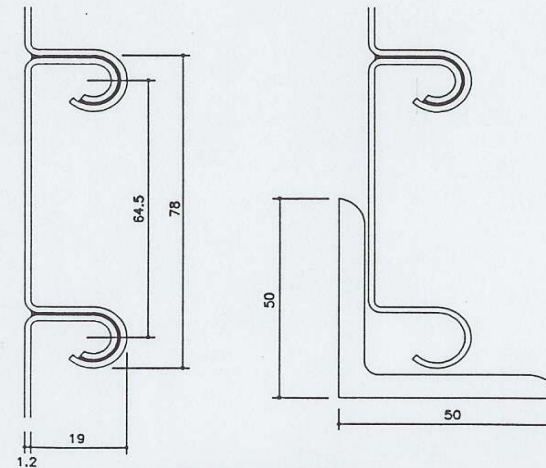
S NO.	SHUTTER NO.	SHUTTER SIZE WIDTH(W) HEIGHT(H)	GRID REF.	LOCATION	QTY.	FIRE RATED	REMARKS
1	PS1	-	-	-	-	-	-



OPENING WIDTH W (m)	OPENING HEIGHT H (m)	(W) (mm)	(H) (mm)	TOTAL HEAD ROOM (mm)	A (mm)	B (mm)	C (mm)
W < 3	H < 5	W-50	H-30	H + 600	W + 420	655	520
3 < W < 5	H < 5	W-50	H-30	H + 600	W + 430	655	520
5 < W < 5	H < 5	W-50	H-30	H + 600	W + 445	655	520



- COMPONENTS :**
- 1) SLATS SECTION
 - 2) CURTAIN GUIDE
 - 3) SHUTTER BARREL
 - 4) MOTOR & MANUAL OPERATION SECTION



PROFILE LATHS
(SECTION THROUGH LATHS)

TECHNICAL CHARACTERISTICS

- 1) THE FIRE RESISTANCE LASTS MORE THAN 240 MINUTES WITH STABILITY AND INTEGRITY MAINTAINED IN ACCORDANCE TO BS 467 PART 22 FOR INTEGRITY & STABILITY OF THE ROLLER SHUTTER.
- 2) SMOKEPROOF: LESS THAN 1.2m³/min.m².
- 3) STRENGTH: WIND RESISTANCE 120kg/m² WITH NO DAMAGE & DEFORMATION.

DRAWING TITLE

PROJECT : THOMSON MEDICAL CENTRE
HART 2-4 HR RATED STEEL ROLLER SHUTTER DETAILS

DATE

JUN 2000

DRAWN

FOONG

CHECKED

PATRICK

SCALE

N.T.S.

DRAWING NO.

HT/TMC/HSRS/2000



HART INDUSTRIES PTE LTD
No.11, Tuas Ave 2, Singapore 639450
Cable: HARTY Telex: RS 24079 HARTY Fax: 2964514

The ownership of the copyright in this drawing is retained by Hart Technologies Pte Ltd whose consent must be obtained before any use of reproduction of this drawing or any part thereof can be made.

C:\THOMSON MC