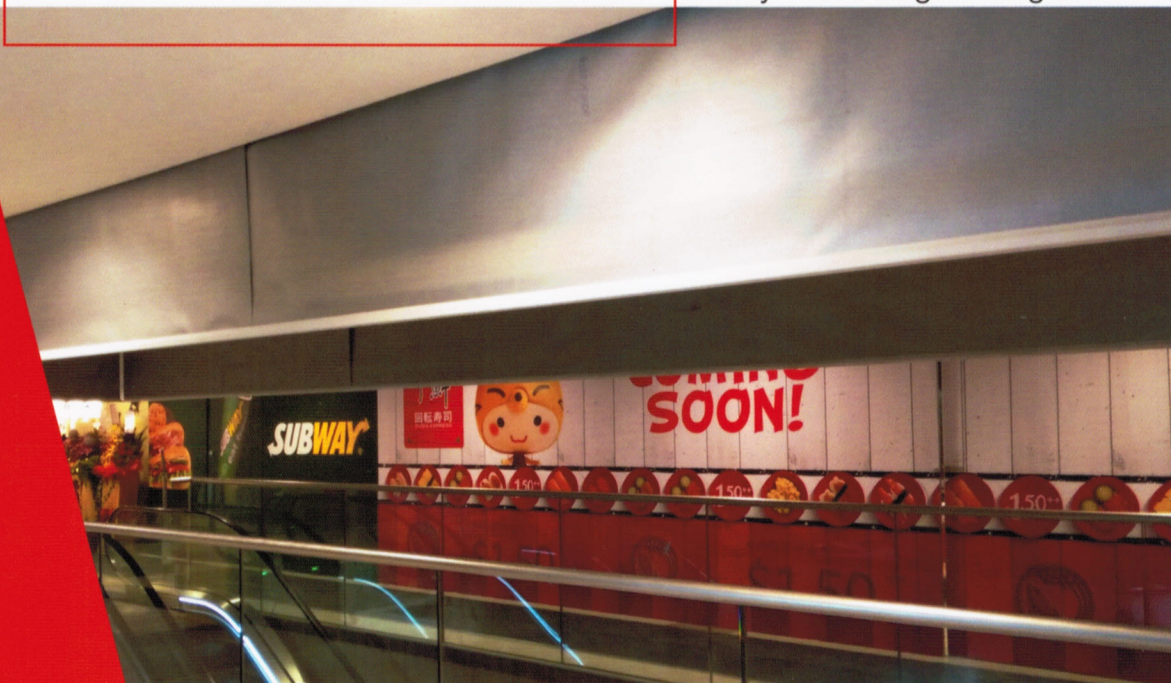


HART GRAVITY DROP EN STANDARD SMOKE CURTAINS

By HART Engineering Pte. Ltd.



The Hart Smoke Curtain comprises technologically advanced fire-resistant fabric encased in a compact Galvanized steel housing. Smoke Curtains remain retracted until activated by an alarm or detector signal, at which time they safely descend to their fire operation positions. For compliance, smoke curtains must be protected from short circuits and total power failures, and this is achieved with the patented Total Gravity Fail-Safe system. Smoke curtains help control the spread of smoke in a building, protect the means of escape and create tenable conditions.

Operation

Smoke curtains are activated upon alarm/detector signal. In the event of a main power failure, they remain retracted through the use of their own dedicated battery back-up power for a pre-determined period (nominally 30 minutes), before descending to activated position.

Curtain

Fabric type is APE 480 silicon coated fiberglass cloth fabric. It is 0.5mm thick, weighs approximately .550kg/m² and is in compliance with class 0 requirements.



Controls

The Hart Smoke Curtain Control System is reliable & simple to use. The system utilises 24V DC motors to activate the smoke curtain automatically when the fire input signal is activated. Manual activation is possible through the "easy to use" user interface. Status indicators allow for quick troubleshooting.

Standard

EN 12101-1/A 1:2006 Annex B, C & D

Country of Origin

Singapore

Warranty

One year.

Finish

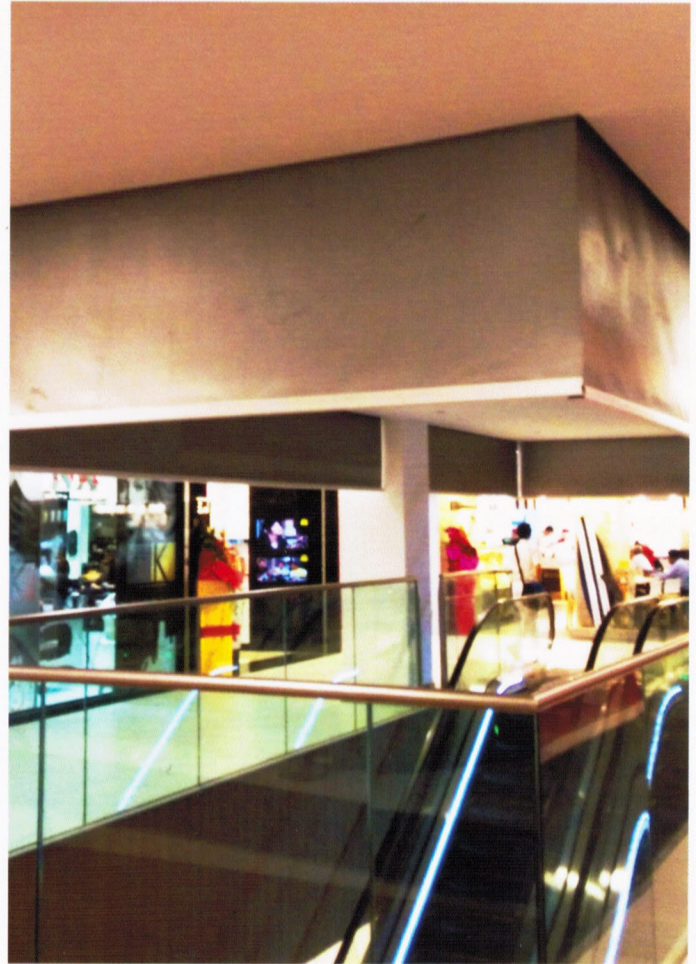
Galvanized Steel. Powder coated finish upon request option.

Alarm Signal

Normally closed voltage free contacts, open on activation.

Monitor Status

Curtain Descend: Normally Open voltage free contact
Panel Fault: Normally Open voltage free contact



Product Details

Classification

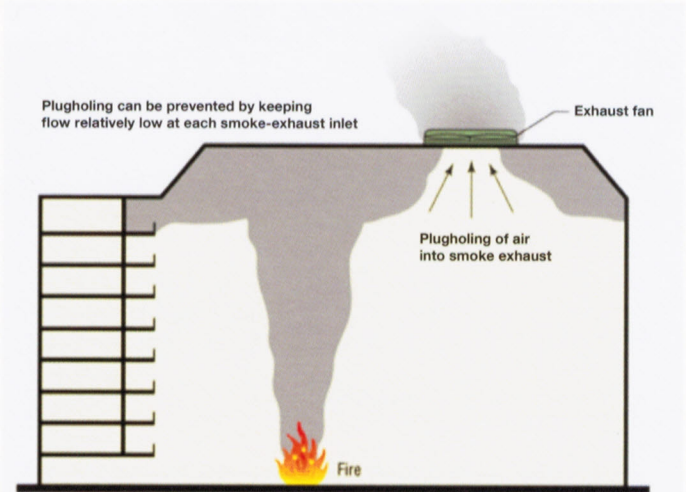
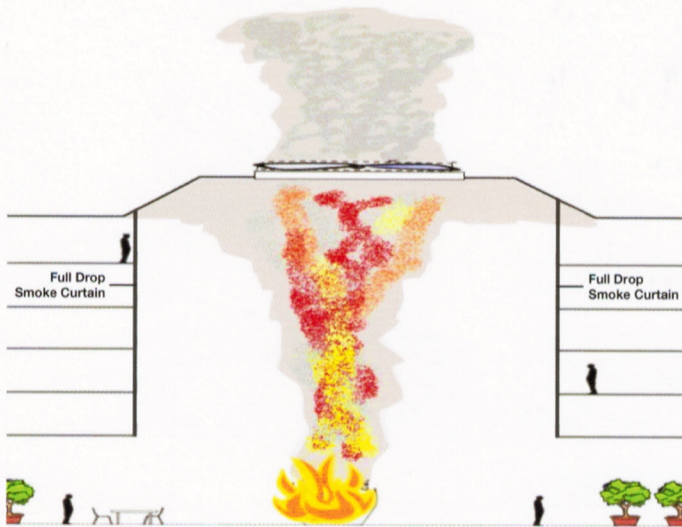
D 30

Fabric

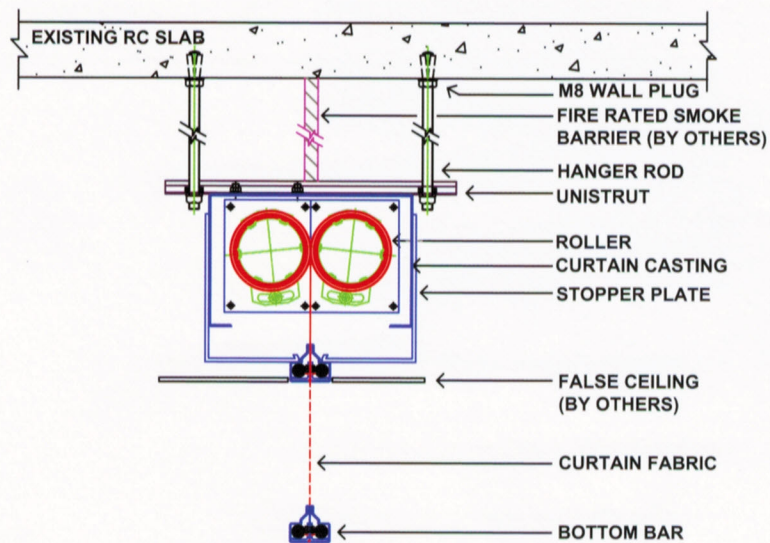
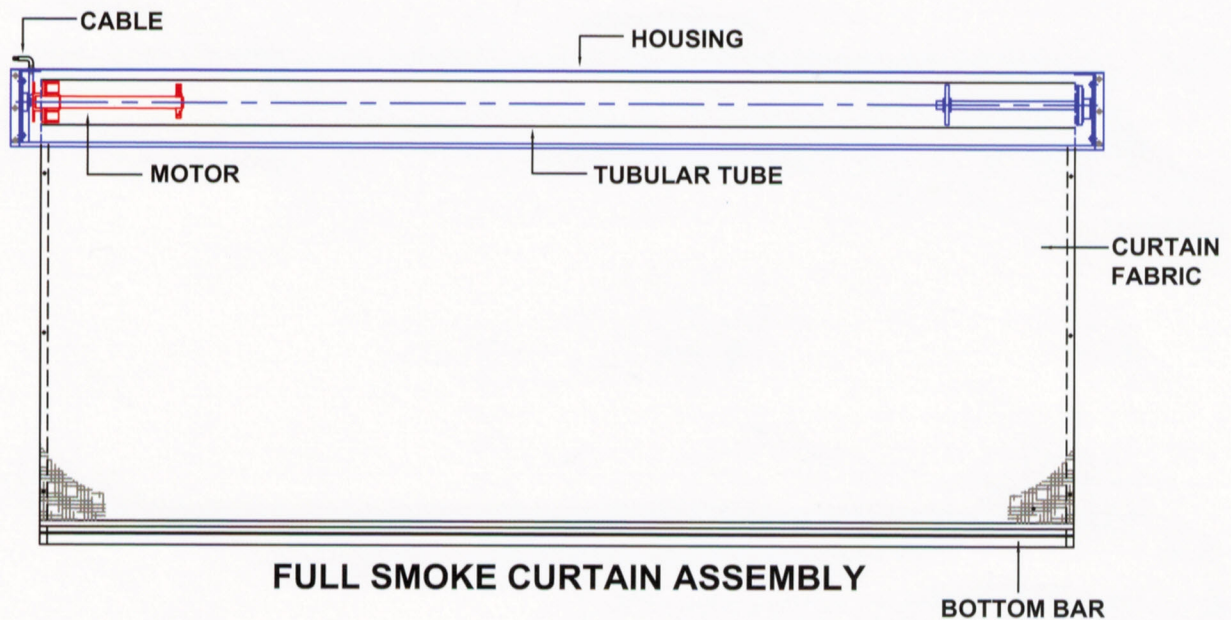
APE 480 silicon coated fiberglass cloth fabric, 0.5mm, 0.55kg/m²



Fire Scenario



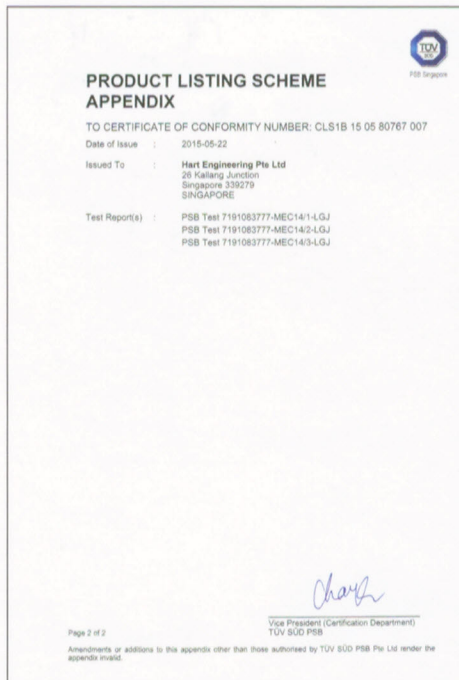
Mounting Detail



Certification



Certificate of Conformity



QEC Certification

Maintenance

Annual service maintenance is recommended to keep the system in good condition.
To find out more of our maintenance service, kindly contact us as below contact.



HART Engineering Pte. Ltd.

No.26, Kallang Junction, Hart House
Singapore 339279
Tel: (65) 62912611
Fax: (65) 62964514/ 62935193
Email: info@hart.sg
Website: <http://www.hart.com.sg>
GST Reg No. : M2-0011794-8

