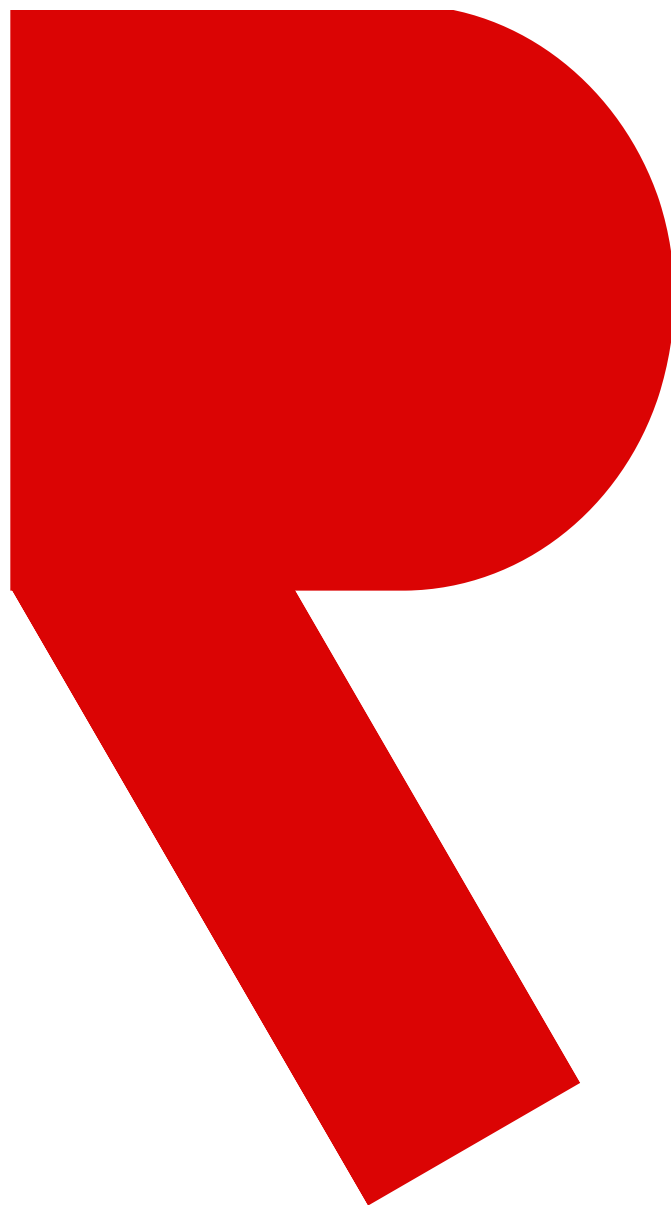




# FIRE DOOR



# TIMBER DOOR

Fire rated composite timber doors are available in 1hr & 2hr rating, the doors are tested in accordance with ISO and Singapore SS 332:2018.

## APPLICATION

Fire rated timber doors are suitable for use in building but not for marine. It can be installed onto masonry wall and partition wall. Some of its areas of application include:

- Offices
- Hotels
- Hospitals
- Schools
- Condominiums and apartments etc.

## CONSTRUCTION

1hr & 2hr timber door panels are made with internal 38/48mm thick composite timber door panel with both sides 3.6mm thick normal plywood finish. Door thickness 45/56mm. Door frame are made of Kapur timber (Frame Profile 140 x 50mm) or Electro Galvanized Frame 1.5mm thick (Frame Profile: 140 x 50mm), 10mm timber beading all round/without 10mm timber beading.

## RECOMMENDED MAX DIMENSION

1hr/2hr Rated Fire Timber Door Approved Size:

|                   |                |
|-------------------|----------------|
| Double Equal Leaf | 2200 x 2700mmH |
| Single Leaf       | 1000 x 3000mmH |

## ADDITIONAL FEATURES

- Vision Panel (Recommended size: 100 x 600 x 6mm Gerogian Wire Glass/Clear Fire Glass)
- Approved Laminates
- Fancy Veneer plywood



# STEEL DOOR

Fire rated composite steel doors are available from 0.5hr to 2hr rating, the doors are tested in accordance with ISO and Singapore SS 332:2018.

## APPLICATION

Fire rated steel doors are suitable for use in building but not for marine. It can be installed onto masonry wall and partition wall. Some of its areas of application include:

- Office buildings
- Factories/Warehouse
- Shopping mall
- MRT station
- Schools/College
- Oil and gas plants (high durability and weather resistant are needed)

## CONSTRUCTION

Hart's steel door panels are made of 1.2mm E.G steel sheet with internal supporting stiffeners running from the top edge of the panels to the bottom edge at equal interval. The stiffeners are also made of 1.2mm E.G steel sheets. All stiffeners are spot welded to the door panels. E.G steel U-channels are provided on the top and bottom edges of the doors. These U-channels allow the height of the doors to be altered at sites where there are changes in the site conditions. Steel frames are made of 1.5mm E.G steel with standard profile 140 x 50 (single/double rebate).

## RECOMMENDED MAX DIMENSION

3700 (W) x 3700 (H) for non fire rated doors and 2400 (W) x 2400 (H) for fire rate doors up to 2 hours fire rating for double leaves doors.

## ADDITIONAL FEATURES

Hart's fire rated steel doors are stuffed with high quality rockwool in the door panels to provide the necessary fire resistant and thermal insulation properties. Compatible rating of vision panels are available with the doors using 5mm clear fire glass. The unique design of the vision panels allow easy removal of the frames so that any broken vision glass can be replaced easily.

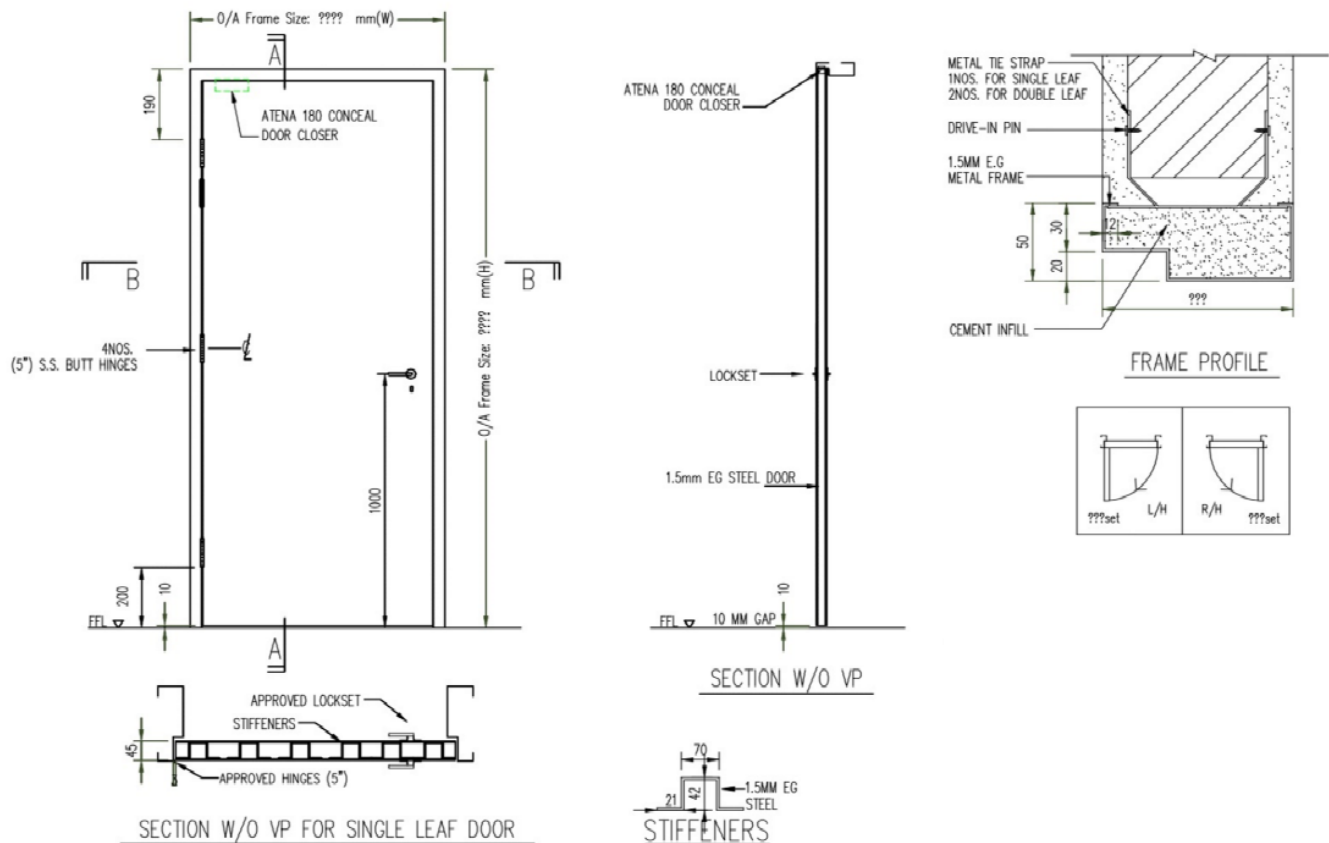


## Fire Rated 1hr Single Leaf Timber Door with Timber Frame Drawing

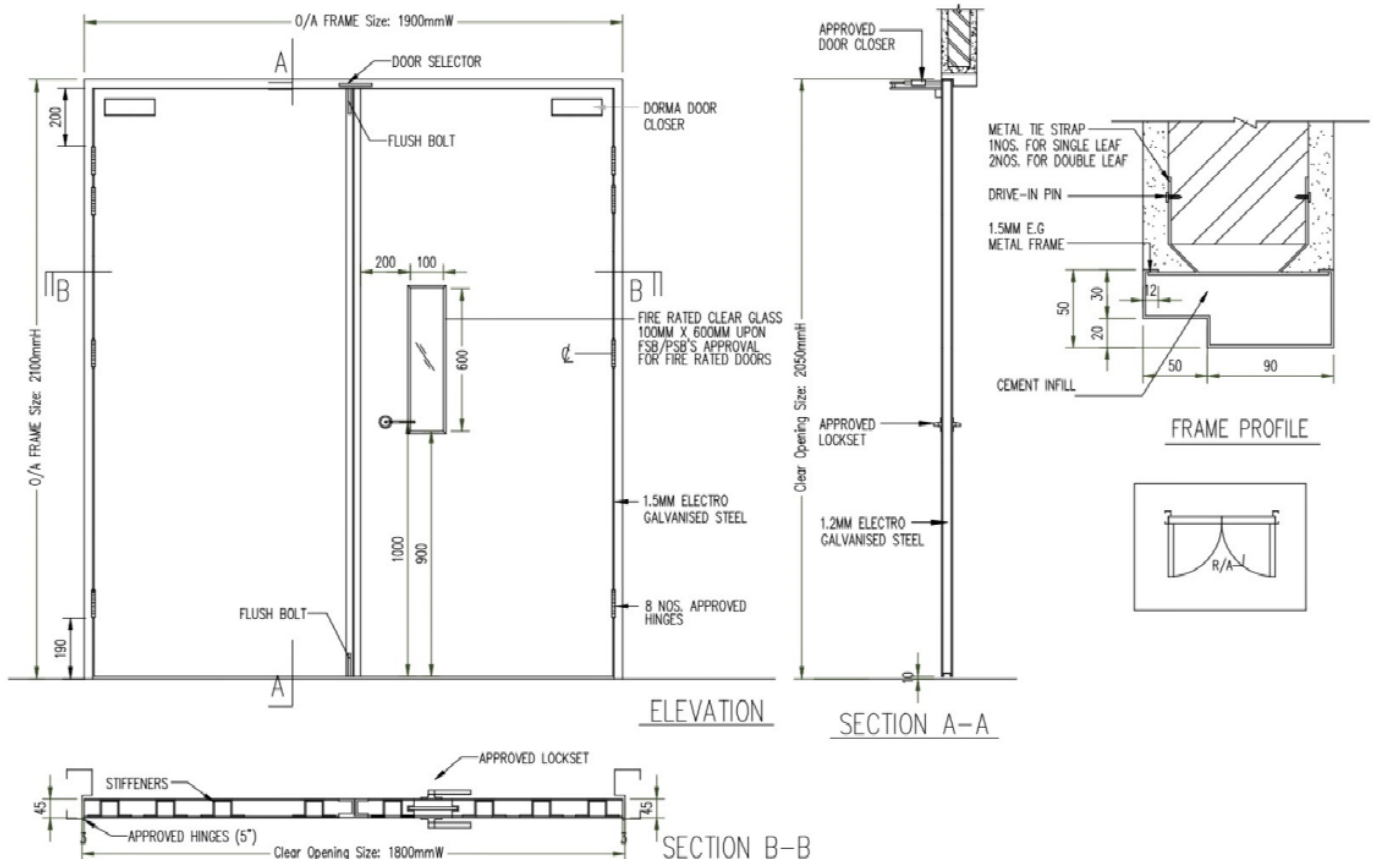


# STEEL DOOR WITH STEEL FRAME DRAWING

## Fire Rated Single Leaf - Steel Door with Steel Frame Drawing

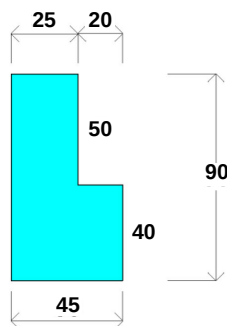


## Fire Rated Double Leaf - Steel Door with Steel Frame Drawing

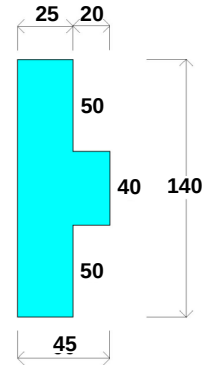


# DOOR FRAME PROFILE

**(A) Timber frame / Timber Door - using Kapur Timber or other approved equivalent**

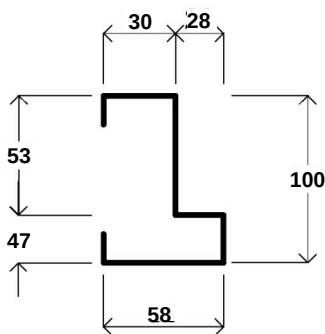


**Single Rebate (standard)**

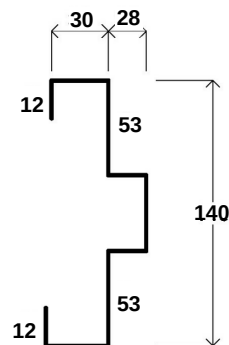


**Double Rebate (optional)**

**(B) Pressed steel frame / Steel Door - 1.5mm Electro Galvanized Steel**

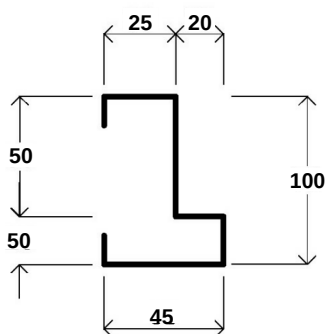


**Single Rebate (standard)  
for Steel Door**

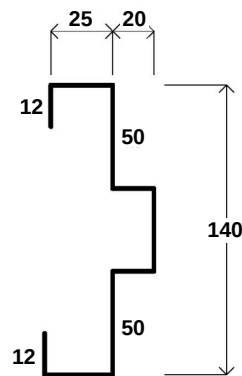


**Double Rebate (optional)  
for Steel Door**  
(Min. 140, can be larger)

**(C) Steel frame / Timber Door - 1.5mm Electro Galvanized Steel**



**Single Rebate (standard)  
for Timber Door**



**Double Rebate (optional)  
for Timber Door**  
(Min. 140, can be larger)

# Project references from 2000

**2000**

THOMSON MEDICAL CENTRE  
SINGAPORE GENERAL HOSPITAL  
NATIONAL JUNIOR COLLEGE  
CHANGI NAVAL BASE

**2001**

PUNGGOL SECONDARY SCHOOL  
JURONG POINT SHOPPING MALL  
TUAS POWER STATION  
7-STOREY FACTORY @KAKI BUKIT ROAD 3  
POLICE STATION AT CHANGI AIRPORT  
BUKIT BATOK GROVE SECONDARY SCHOOL  
SEMBAWANG SECONDARY SCHOOL  
IUP-HDB PROJECTS  
ARMY LOGISTICS

**2002**

CHANGI BUSINESS PARK  
LRT-C810 PUNGGOL, SENGKANG STATION  
IPAM/CIVIL SERVICES COLLEGE AT NUS  
SEBMCORP WAREHOUSE AT 16, JALAN BUROH

**2003**

TANGLIN SECONDARY SCHOOL  
YISHUN SECONDARY SCHOOL

**2004**

KPE C421 & C422 KALLANG EXPRESS WAY

**2005**

C856 MRT AT HARBOURFRONT STATION

**2006**

DSTA-CAMP PROJECT  
NATIONAL UNIVERSITY HOSPITAL  
KK HOSPITAL

**2007**

INTERNATIONAL BUSINESS PARK  
NATIONAL UNIVERSITY OF SINGAPORE

**2008**

CHANGI GENERAL HOSPITAL  
HDB AREA OFFICE AT BUKIT BATOK  
A & A WORKS AT COMMERCIAL BUILDING

**2009**

A & A WORKS AT 60, ROBINSON RD  
9-STOREY FACTORY @1, COMMONWEALTH LANE  
NASSIM PARK CONDO  
LORONG MELAYU APARTMENT

**2010**

ELLIOT CONDO  
AUOSITE AT 10 TAMPINES INDUSTRIAL AVE 3  
UPPER JURONG RD CLUB HOUSE  
MARINA COSTAL EXPRESS WAY  
THONG CHAI MEDICAL INSTITUTION  
ORCHARD TURN-LTA  
KIM SENG RD CONDO  
MRT-C854, FARRER RD STATION

**2011**

RESORTS WORLD SENTOSA  
FACTORY/WAREHOUSE AT 10 TOH GUAN RD  
CASPIAN CONDO  
ADAM RD APARTMENT  
HYFLUX

**2012**

FACTORY @ 107 ENUOS AVE 3  
NUH HOSPITAL  
STANDARD CHARTERED BANK @ 6 BATTERY RD  
WEST POINT BIZHUB AT TUAS SOUTH

**2013**

C 921  
NUS (YALE)

**2014**

NUS (YALE)  
GWA - YISHUN  
SGH ACADEMIA  
24,24A CHAI PING RD

**2015**

SEDONA (YANGON, MYANMAR)  
CHINA RAILWAY (MRT)  
SULE TRADER HOTEL (YANGON, MYANMAR)  
SENG KANG EC  
UNITED WORLD COLLEGE  
SUNGEI KADUT LOOP  
NTU

**2016**

NTU  
TUAS SOUTH  
TAI SENG  
THE GREEK  
ST JOHN  
WOODLAND LINK  
SINGAPORE GENERAL HOSPITAL  
42 BEACH ROAD  
C927  
CHANGI GENERAL HOSPITAL  
73 BUKIT TINGGI TD  
CHANGI AIRPORT  
45 UBI RD 1

**2017**

TUAS AVE 2  
PARKWAY CANCER CENTER  
PUH HLAING HOTEL (MYANMAR)  
EVONIK

**2018**

STATECOURT  
DOJO  
SYSCON PTE LTD  
SCIENCE PARK  
CONFECTIONARY FACTORY

**2019**

FUNAN  
SEKOKO SOUTH ROAD  
FOREST WOOD  
RAFFLES GRIL'S HIGH SCHOOL  
WILDRICE  
THE CENTRAL YANGON  
SHWE NA GAR  
WOODLANDS BUS INTERCHANGE  
NO.6 SEKOKO SOUTH  
PUB WOODLEIGH  
CONTAINER DOOR

**HART ENGINEERING (PRIVATE) LIMITED**

11 Tuas Avenue 2 Singapore 639450

Tel: (65) 6291 2611

Fax: (65) 6296 4514

Email: [info@hart.sg](mailto:info@hart.sg)

Web: [www.hart.com.sg](http://www.hart.com.sg)